

21

The Competition in

Science & Research Skills

***Science & Research
Test I & II
MODEL PAPERS***

Class : III



Eduranet

Intellectual Olympiad Foundation

(Promoted by Eduranet Educational Society (Regd. 309/09))

Hyderabad | India

Eduranet Intellectual Olympiad Foundation

10-3-304/A/2,
Humayun Nagar,
Hyderabad-500 028.
Andhra Pradesh,
India.

Phone : 040 - 23530999

Eduranet is a registered trademark of Eduranet Educational Services (P) Ltd., in India.

© Copyrights - Eduranet Intellectual Olympiad Foundation
2010

First Published - 2012

All rights reserved. No part of this publication may be reproduced, stored in a retrieval system, or transmitted, in any form or by any means, without the prior permission in writing, of Eduranet Intellectual Olympiad Foundation.

ISBN - 81- 89528- 04-1

SYLLABUS

General Awareness

1. Our Society
2. Our Surroundings
3. The Univers
4. Animals
5. Plants

Science

1. Food
2. Our Shelter & Clothes
3. Transportation
4. Plants
5. Communication
6. Air, Water And Soil

Our Environment

1. Work And Play
2. Work, Force & Enerty
3. Map
4. India
5. World
6. General Awareness

TABLE OF CONTENTS

- 1) **Science & Research Test - I 5 - 23**
- 2) **Science & Research Test - II 24 - 32**

SCIENCE & RESEARCH TEST-I

CODE: 2131

PRELIMS

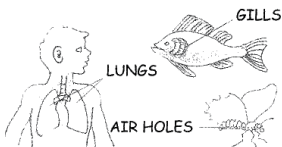
Max. Marks : 75

Duration : 75 Mins.

General Instructions :

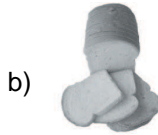
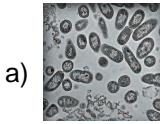
1. Please find the Answer Sheets (OMR) with in the envelop given to you.
2. Mention your Test Code, Student ID, Name, Class, Section and School Name on the OMR Sheet as per Question Paper and Hall Ticket.
3. This question paper contains 75 Questions, duration is 75 minutes.
4. Do rough work in the empty sheet provided along with this question paper.
5. Answer questions in OMR sheet only.
6. Don't write or tick anything on the question paper.
7. Use only Black or Blue Ball Point Pen or Dark Pencil to answer the question in OMR sheet.
8. Indicate the correct answer by darkening one of the 4 or 5 responses provided.
9. Submit only OMR sheet to the invigilator

1. What do the given pictures represent

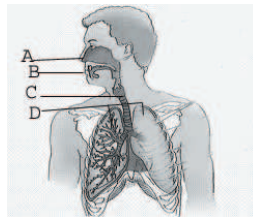


- a) Living things feel
- b) Living things grow
- c) Living things breathe
- d) Living things reproduce

2. Which of the following is a non - living thing?



3. Identify the correct organs in the parts labelled below in the given diagram?



- a) A - Mouth, B - Nose, C- Lungs, D- Windpipe
- b) A - Lungs, B- Windpipe C-Mouth , D- Nose
- c) A- Nose, B- Lungs, C- Mouth, D- Windpipe
- d) A - Nose, B- Mouth, C- Windpipe, D- Lungs

4. Which of the following is not a part of the circulatory system?

- a) Spinal Cord
- b) Heart
- c) Arteries
- d) Veins

5. Object	Moves	Reproduces	Grows
A	✓	✓	✓
B	✓	X	X
C	X	X	X

Which statement correctly describes the objects above?

- a) Objects A & B are living things
 - b) Objects A & C are living things
 - c) Only object C is a non-living thing
 - d) Objects B & C are non - living things
- 6. The lungs take in oxygen from the air and remove Carbon dioxide from the body. Which of the following systems helps to transport oxygen to all parts of the body?**
- a) Digestive System
 - b) Muscular system
 - c) Circulatory System
 - d) Respiratory System
- 7. Which senses will you use to describe the object in the picture to your friend ?**



- a) Skin
- b) Hearing
- c) Touch
- d) Smell

8. What are the materials used by birds to build their nests?

- a) Twigs and straw
- b) Cloth
- c) Leaves, dried grass
- d) Both (a) and (c)

9. How do birds reproduce?

- a) By laying eggs
- b) By giving birth to babies
- c) Through body division
- d) None

10. What helps birds fly?

- a) Streamlined body
- b) Light and hollow bones
- c) A pair of legs with claws
- d) All of the above

11. Who carry our luggage at railway stations?

- a) Vegetable Vendors
- b) Coolies
- c) Pilots
- d) Drivers

12. Who checked the tickets of the passengers travelling in the train?

- a) Coolie
- b) Rickshaw Driver
- c) Bus Conductor
- d) Ticket Collector

13. Who controls the air traffic at air ports?

- a) Conductors
- b) Air traffic control room
- c) Station Master
- d) Airhostess

14. We can send e-mail to friends and family through _____?

- a) Telephone
- b) Computer
- c) Radio
- d) Letter

15. Which among these is the oldest way of mass communication?

- a) Television
- b) Newspaper
- c) Radio
- d) Internet

-
- 16. Due to _____ we can send or receive signals from space which are essential for T.V. or Radio broadcasts.**
- a) Connections
 - b) Satellites
 - c) Internet
 - d) E-mail
- 17. The particles of smoke and dust rise up in the atmosphere and cause_____**
- a) Soil Pollution
 - b) Water Pollution
 - c) Noise Pollution
 - d) Air Pollution
- 18. The depletion in the Ozone layer is caused by**
- a) Nitrous Oxide
 - b) Carbon Dioxide
 - c) Chlorofluorocarbons
 - d) Methane
- 19. Air pollution is caused by?**
- a) Insecticides
 - b) Sewage
 - c) Loud speakers
 - d) Smoke

20. Process through which plants reproduce:

- a) Evaporation
- b) Condensation
- c) Pollination
- d) Eating

21. 71% of earth surface is covered with:

- a) Land
- b) Air
- c) Water
- d) Coal

22. The shape of a shadow is the same as the ____ of the object that the light is shining on.

- a) Density
- b) Material
- c) Outline
- d) Colour

23. Which of the following cannot be seen clearly on a dark and very cloudy night?

- a) Star
- b) Street Lamp
- c) Fireflies
- d) Neon Signs

24. Magnets come in different shapes and sizes. Which of the following is not one of the shapes?

- a) V- shape
- b) Horse -shoe
- c) U-shape
- d) Bar

25. The huge ball of fire that gives us heat and light

- a) Moon
- b) Sun
- c) Mercury
- d) None

26. This is the satellite of the earth

- a) Sun
- b) Star
- c) Moon
- d) Both (a) and (b)

27. The first man to land on the moon

- a) Galileo Galilei
- b) Isaac Newton
- c) C.V. Raman
- d) Neil Armstrong

28. This instrument helps us to see far-off objects such as the stars, the moon and the planets clearly

- a) Telescope
- b) Mano Meter
- c) Altimeter
- d) Both a and b

29. Groups of stars are called

- a) Satellites
- b) Constellations
- c) Planets
- d) None

30. Moon takes _____ days to complete one circle around the earth

- a) 28 days
- b) 27 days
- c) 29 days
- d) 30 days

31. These are bushy plants

- a) Shrubs
- b) herbs
- c) trees
- d) both b and c

32. _____ is called the kitchen of the plants

- a) Flower
- b) Fruit
- c) Seed
- d) Leaf

33. Plants give out this gas

- a) Carbondioxide
- b) Hydrogen
- c) Oxygen
- d) None

34. Plants are green in colour because

- a) They like green colour
- b) They have chlorophyll
- c) They take green light
- d) Both b and c

35. Thin and bushy roots together are called

- a) Tap roots
- b) Mother roots
- c) Fibrous roots
- d) Main roots

36. Example of plant root that store food

- a) Onion
- b) Potato
- c) Ginger
- d) radish

37. Plants use this gas for photosynthesis

- a) Carbondioxide
- b) Nitrogen
- c) Hydrogen
- d) Oxygen

38. An animal killed by another animal for food is called

- a) predator
- b) biat
- c) Prey
- d) None

39. They help us for body building and repairing

- a) Carbohydrates
- b) Proteins
- c) Fats
- d) Minerals

40. One of the following are known as cereals

- a) Rice and Wheat
- b) Potato and Onion
- c) Sugar cane and beet root
- d) Both a and b

41. These are the flesh eating animals

- a) Giraffe and Fox
- b) Cow and Tiger
- c) Goat and Rabbit
- d) Lion and Tiger

42. One of the following animals swallow their food and then bring it back into their mouth for chewing

- a) Lion
- b) Cow
- c) Tiger
- d) Fox

43. Foods that give us all the energy needed to work and play

- a) Proteins
- b) Vitamins
- c) Carbohydrates
- d) Minerals

44. A grasshopper eats grass, a frog eats the grasshopper, a snake eats the frog, and an eagle eats the snake. This relation is called.

- a) Food web
- b) Food chain
- c) link
- d) Both a and c

45. ____ is an artificial fibre

- a) Rayon
- b) Silk
- c) Cotton
- d) None

46. We get silk from the ____ of silk worm

- a) cater pillar
- b) egg
- c) adult
- d) cocoon

47. These clothes keeps us warm in winter

- a) Cotton
- b) Woollen
- c) Silk
- d) Nylon

48. Igloos are made of

- a) Ice
- b) Bricks
- c) Paper
- d) Cloth

49. We get natural fibres from

- a) plants
- b) animals
- c) both (a) and (b)
- d) Human beings

50. This keeps the house free from germs

- a) Sunlight
- b) Insecticides
- c) Room sprays
- d) Both b and c

51. We wear clothes made of different materials according to the_____ of the place we live in

- a) peple
- b) surroundings
- c) houses
- d) climate

52. These suck the food into their mouth with the help of long tube like structure

- a) snakes and crocodiles
- b) butterflies and mosquitoes
- c) vultures and crows
- d) both a and c

53. The bird that cannot fly in the air

- a) Parrot
- b) Sparrow
- c) Hen
- d) Crow

54. These are called pet animals

- a) Fox and Dogs
- b) Cheetah and Monkey
- c) Monkey and Dogs
- d) Dogs and Rabbits

55. One of the following animals has long neck which helps it to reach the branches of tall trees

- a) Giraffe
- b) Cheetah
- c) Donkey
- d) Monkey

56. We use _____ to go to a foreign country

- a) bus
- b) aeroplane
- c) car
- d) both a and b

57. The uniform of coolies in railway station is in this colour

- a) blue
- b) green
- c) red
- d) yellow

58. _____ is used to carry patients urgently

- a) Train
- b) Car
- c) Bus
- d) Ambulance

59. Moving air is called

- a) Wind
- b) Cyclone
- c) Storm
- d) None

60. We can only feel air when it

- a) Is visible
- b) Moves
- c) both a and b
- d) None

61. Three-fourths of the earth's surface is covered by

- a) air
- b) soil
- c) water
- d) dust

62. When the sun shines, water present in the wet clothes get heated and changes into water vapour. This process is called

- a) Condensation
- b) Evaporation
- c) Water cycle
- d) Water Vapour

63. Air contains water in the form of

- a) Water Vapour
- b) Solid
- c) Liquid
- d) Dust

64. Human body is made up of ____ bones

- a) 205
- b) 206
- c) 207
- d) 208

65. This gives proper shape to the body

- a) Nerves
- b) Heart
- c) Lungs
- d) Bones

66. Waste from our body in the form of urine is removed by

- a) Lungs
- b) Liver
- c) Kidneys
- d) Heart

67. Leaves of these plants store food

- a) cabbage and sugar cane
- b) spinach and cabbage
- c) lettuce and wheat
- d) wheat and spinach

68. Some Flowers have a sweet-smelling substance called

- a) nectar
- b) pollengrains
- c) both (a) and (b)
- d) None

69. This pumps the blood to all parts of the body

- a) Lungs
- b) Liver
- c) Heart
- d) Kidney

70. The house of a dog is

- a) Kennel
- b) den
- c) shed
- d) burrow

71. Something that does not let water go through it

- a) Water vapour
- b) Water cycle
- c) Water proof
- d) None

72. A weak house made of mud and straw is called a house

- a) pucca house
- b) kutcha house
- c) building
- d) both (a) and (b)

73. This is the smallest planet

- a) Jupiter
- b) Mercury
- c) Saturn
- d) Venus

74. ____ used telescope for the first time

- a) Neil Armstrong
- b) Newton
- c) Galileo
- d) Edison

75. The huge holes on the moon are known as

- a) craters
- b) phases
- c) both (a) and (c)
- d) only (b)

KEY TO MODEL PAPER - I

- | | | | | | |
|-------|-------|-------|-------|-------|-------|
| 1. c | 2. b | 3. d | 4. a | 5. d | 6. c |
| 7. d | 8. d | 9. a | 10. b | 11. b | 12. d |
| 13. b | 14. b | 15. c | 16. b | 17. c | 18. c |
| 19. d | 20. d | 21. c | 22. c | 23. a | 24. a |
| 25. b | 26. d | 27. d | 28. a | 29. b | 30. c |
| 31. a | 32. d | 33. c | 34. b | 35. c | 36. d |
| 37. a | 38. c | 39. b | 40. a | 41. d | 42. b |
| 43. c | 44. b | 45. a | 46. d | 47. b | 48. a |
| 49. c | 50. a | 51. d | 52. b | 53. c | 54. d |
| 55. a | 56. b | 57. c | 58. d | 59. a | 60. b |
| 61. c | 62. b | 63. a | 64. b | 65. d | 66. c |
| 67. b | 68. a | 69. c | 70. a | 71. c | 72. b |
| 73. b | 74. c | 75. a | | | |

SCIENCE & RESEARCH TEST-II

CODE:2132

FINALS

Max. Marks : 40

Duration : 60 Mins.

General Instructions :

1. Please find the separate Answer Sheets along with the question paper.
2. Mention your Test Code, Student ID, Name, Class, Section, Contact no. and School Name on the Answer Sheet as per Question Paper and Hall Ticket.
3. This question paper contains VI sections, duration is 60 minutes.
4. Please read the instructions carefully before attempting the question.
5. Answer questions in Answer Sheet only.
6. Don't write or tick anything on the question paper.
7. Use only Black or Blue Ball Point Pen to answer the question in Answer Sheet.
8. Submit only answer sheet(s) to the invigilator.

SECTION - I

7 × 1 = 7m

DIRECTIONS : (1 - 7) : Each question contains statements given in two columns which have to be matched. Statements in column A have to be matched with statements in column B and write in the answer sheet.

Column - A

- (1) Luminous object
- (2) Shadow

Column - B

- (A) Table
- (B) Density

- | | |
|-------------------------|-----------------|
| (3) Non-luminous object | (C) Push & Pull |
| (4) Noise | (D) Bulb |
| (5) Light | (E) Eclipse |
| (6) Force | (F) Doorbell |
| (7) Sound | (G) Loudspeaker |
| | (H) Distance |
| | (I) Candle |

SECTION - II**5 × 1 = 5m**

DIRECTIONS : (8 - 12) – Read the following statements and write your answer as true or false with reasons or solutions in the answer sheet.

8. The tail of a bird helps it to change its direction while flying.
9. Herbs are bushy plants.
10. Wheat, Maize and Bajra are pulses.
11. The hand pump gives us underground water.
12. Air is needed only for breathing.

SECTION - III**5 × 1 = 5m**

DIRECTIONS : (13-17) – Complete the following statements with an appropriate word/term to be written in the answer sheet.

13. A house _____ us from all unfavourable conditions.
14. You can travel to the moon in a _____

15. The uppermost layer of the earth's crust is _____
16. The two main types of roots are _____ and _____
17. An _____ eats both plants and flesh of other animals.

SECTION - IV**6 × 2 = 12m****Answer the following Questions (18 - 23)****(Concept, Application, Skill based)**

18. What is the function of the heart?
19. The moon has no light of its own. How can we still see it?
20. What kind of teeth do the flesh eating animals have?
21. Do you know there are 2 flowers which look quite similar but have different colours and are delicious to eat? Name them.
22. Why do women in Haryana and Rajasthan cover their faces with an odhni?
23. What is a balanced diet ?

SECTION - V**6 × 1 = 6m****Picture based questions(24 - 29)**

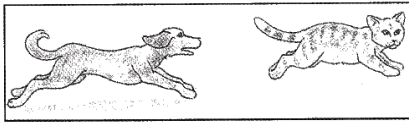
Look carefully at the given set of pictures and fill the phenomena of the living things represented by them in the blank spaces given.

24)



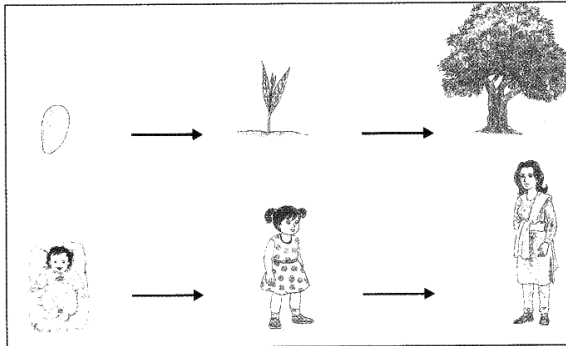
Living things _____

25)



Living things _____

26)



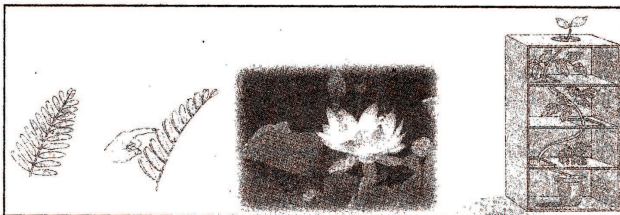
Living Things _____

27)

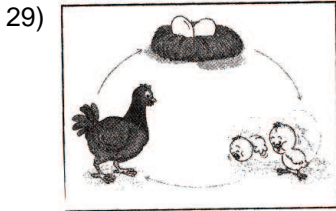


Living Things _____

28)



Living Things _____



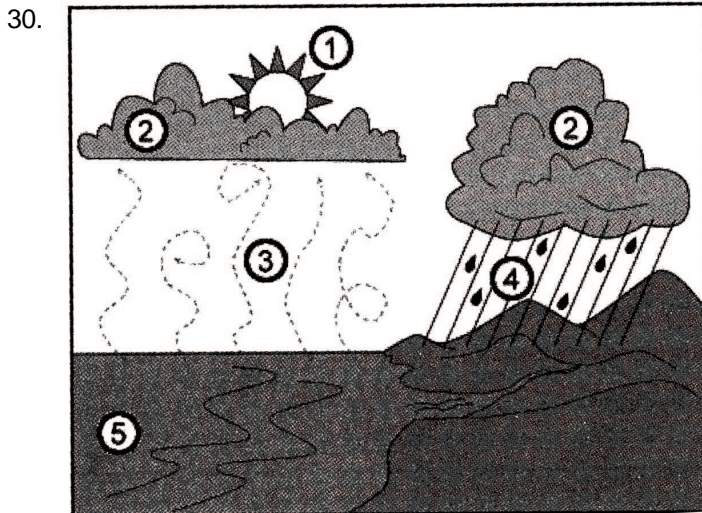
Living Things _____

SECTION - VI

5 × 1 = 5m

Identification Based Questions

DIRECTIONS : Fill up the blanks and look at the picture identify the process:



The ____ 1 ____ warms and ____ 3 ____ the water in oceans and rivers. These vapours rise and condense, forming ____ 2 ____ . These rain bearing clouds move over land and their moisture falls down in the form of ____ 4 ____ , ice or snow. This water once again fills streams and rivers, flowing back into the ____ 5 ____ , where the evaporation starts again PROCESS: Water cycle.

SOLUTIONS TO MODEL PAPER - II**SECTION – I****Match the Following**

- 1) → D;
- 2) → E;
- 3) → A;
- 4) → F;
- 5) → I
- 6) → C;
- 7) → G

SECTION – II**True / False**

- 8) True
- 9) False
- 10) False
- 11) True
- 12) False

SECTION – III**Fill in the Blanks**

- 13) Protects
- 14) Aeroplane Helicopter
- 15) Soil
- 16) Tap root, fibrous root
- 17) Omnivore

SECTION – IV**Answer the following Questions****(concept, Application, Skill based)**

- 18. The heart pumps blood to all parts of the body through the thread-like tubes called vessels. The vessels taking blood away from the heart are called arteries. The vessel bringing blood towards the heart are called veins.
- 19. We can see the moon because it reflects the light of the sun falling on its surface.
- 20. Flesh-eating animals such as tigers, lions, foxes, and dogs have very sharp, pointed front teeth to tear the flesh, They have strong jaws. Their back teeth are broad and flat. These animals chew the flesh with their back teeth.
- 21. Califlower, Broccoli

22. Women in Haryana and Rajasthan cover their faces with an odhni.
It is their culture
23. When the food we eat consists of all necessary nutrients like carbohydrates, fats, proteins, vitamins, minerals and water, it is known as balanced diet.

SECTION – V

Picture Based Questions

24. Living things breathe
25. Living things Move
26. Living Things Grow
27. Living Things Need food
28. Living Things Feel changes
29. Living Things Reproduce

SECTION – VI

Identification Based Questions

- 30) 1. sun 2. clouds 3. evaporates 4. Rain 5. Oceans